

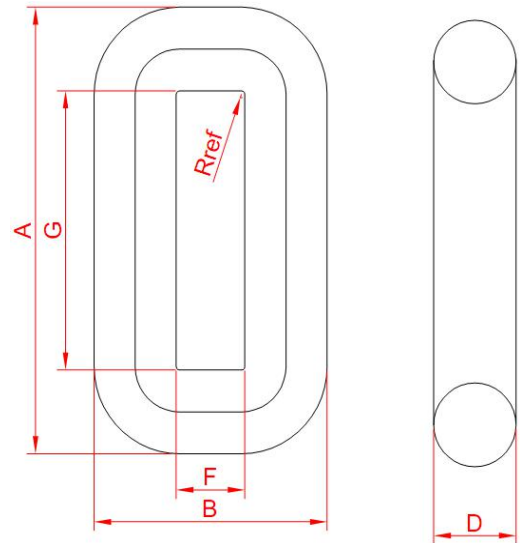
R型铁芯 / R Core

R型铁芯采用HiB高磁感硅钢片绕制而成。
R-cores are wound in HiB electrical steels and no-load losses are guaranteed.

R型铁芯优势/Advantages

体积小/Compact dimensions;
效率高/High efficiency;
低漏磁/Low magnetic leakage;
安全可靠/Reliable safety;
低噪音等/Low humming etc.

除铁芯之外，日钢也可提供配套的骨架、底座。
Besides cores, bobbins and mounting bases for transformer unit can also be obtained from NICORE as a package.



铁芯型号 Code	铁芯尺寸/Dimensions						额定功率 Approx V.A.
	G	F	A	B	D	R	
	min	min	max	max	max	max	
R-10	44.5	15.5	77.5	48	16	1	10
R-15	44.5	15.5	78.5	50	17	1	15
R-20	44.5	18	80	53.5	17.5	1	20
R-25	45	18	84.5	57.5	19	1	25
R-30	56	20	95.5	59.5	19	1	30
R-35	57	21	97.5	61.5	20	1	35
R-40	55	20.5	97.5	63	20.5	1	40
R-50	54.5	22	100	67.5	22	1	50
R-65	59	23	104.5	68.5	23	1	65
R-80	75	23.5	121.5	70	23.5	1	80
R-100	72	29	121.5	78	25.5	1.5	100
R-160	84	31	132	85	27	1.5	160
R-260	95.5	33	152	90	29	1.5	260
R-320	101	37.4	161	97.4	30.5	1.5	320
R-600	109	37.5	182	110.5	37	1.5	600
R-1000	135	44	220	128	43	2	1000
R-1500	135	48	245	158	54.5	2	1500

R型铁芯可根据客户实际需求定制，最大功率约5KVA。
Customized R Core is welcome, maximum V.A. is upto 5KVA.